



GJD7000H-3 DIESEL PORTABLE GENSET

GRUP	
STANDBY	7
PRIME	6

Prime Power

Working on the long-term disruption of network energy , An overload of 10% is allowed for 1 hour of every 12 hours. In accordance with ISO 8528/1 (2005) - PRP

Standby Power

With in the short-term energy supply interruption ; The Generator sets in accordance ISO 8528/5-ESP can give a maximum power.

Main Features

- * CE, ISO, TSE compliant for stationary application
- * Model available in openskid and soundproofed
- * With galvanized rustproofed canopy
- * With in High level Designed, engineered and manufacturing genset and optimal performance
- * 65-75 Noise isolation within modüler canopy
- * Easy operation, maintenance and power panel
- * Turkish, English, Russian language choice

GJD7000H-3		
FREQUENCY	Hz.	50
VOLTAGE	v	220
STANDBY	kVA	7
PRIME	kVA	6
AMPER	A	22,7
PHASE		1
VOLTAGE REGULATION		AVR
POWER FACTOR		1
NOISE (DB)	db	75
ENGINE MODEL		190FAE
BORE AND STROKE	mm	90X75
Max.Power HP/rpm	HP/rpm	12HP/3000
STARTING SYSTEM		Elektric Start
OIL CAPACITY	Litre	1,7
FUEL CAPACITY	Litre	15
FUEL CONSUMPTION	gkW/h	280
N.W/G.W(KG)	kg	115
DIMENSION (EXBXY) MM	mm	900x630x730
20FT (SET)		76
40HQ(SET)		152





GJD8000H-3 DIESEL PORTABLE GENSET

GRUP	
STANDBY	8
PRIME	7

Prime Power

Working on the long-term disruption of network energy , An overload of 10% is allowed for 1 hour of every 12 hours. In accordance with ISO 8528/1 (2005) - PRP

Standby Power

With in the short-term energy supply interruption ; The Generator sets in accordance ISO 8528/5-ESP can give a maximum power.

Main Features

- * CE, ISO, TSE compliant for stationary application
- * Model available in openskid and soundproofed
- * With galvanized rustproofed canopy
- * With in High Level Designed, engineered and manufacturing genset and optimal performance
- * 65-75 Noise isolation within modüler canopy
- * Easy operation, maintenance and power panel
- * Turkish, English, Russian language choice

GJD8000H-3		
FREQUENCY	Hz.	50
VOLTAGE	v	230/400
STANDBY	kVA	8
PRIME	kVA	7
AMPER	A	12,16
PHASE		3
VOLTAGE REGULATION		AVR
POWER FACTOR		0,8
NOISE (DB)	db	75
ENGINE MODEL		192FAE
BORE AND STROKE	mm	92X75
Max.Power HP/rpm	HP/rpm	13HP/3000
STARTING SYSTEM		Elektric Start
OIL CAPACITY	Litre	1,7
FUEL CAPACITY	Litre	15
FUEL CONSUMPTION	gkW/h	242
N.W/G.W(KG)	kg	125
DIMENSION (EXBXY) MM	mm	900x630x730
20FT (SET)		76
40HQ(SET)		152





GJD 1000H-3 DIESEL PORTABLE GENSET

GRUP	
STANDBY	9
PRIME	8

Prime Power

Working on the long-term disruption of network energy , An overload of 10% is allowed for 1 hour of every 12 hours. In accordance with ISO 8528/1 (2005) - PRP

Standby Power

With in the short-term energy supply interruption ; The Generator sets in accordance ISO 8528/5-ESP can give a maximum power.

Main Features

- * CE, ISO, TSE compliant for stationary application
- * Model available in openskid and soundproofed
- * With galvanized rustproofed canopy
- * With in High level Designed, engineered and manufacturing genset and optimal performance
- * 65-75 Noise isolation within modüler canopy
- * Easy operation, maintenance and power panel
- * Turkish, English, Russian language choice

GJD 1000H-3		
FREQUENCY	Hz.	50
VOLTAGE	v	220
STANDBY	kVA	9
PRIME	kVA	8
AMPER	A	36,36
PHASE		3
VOLTAGE REGULATION		AVR
POWER FACTOR		1
NOISE (DB)	db	70
ENGINE MODEL		198FAE
BORE AND STROKE	mm	98x82
Max.Power HP/rpm	HP/rpm	14HP/3000
STARTING SYSTEM		Elektric Start
OIL CAPACITY	Litre	1,7
FUEL CAPACITY	Litre	30
FUEL CONSUMPTION	gxkW/h	230
N.W/G.W(KG)	kg	210
DIMENSION (EXBXY) MM	mm	1100x760x860
20FT (SET)		30
40HQ(SET)		96





GJD 16000S-3 DIESEL PORTABLE GENSET

GRUP	
STANDBY	13,5
PRIME	15

Prime Power

Working on the long-term disruption of network energy , An overload of 10% is allowed for 1 hour of every 12 hours. In accordance with ISO 8528/1 (2005) - PRP

Standby Power

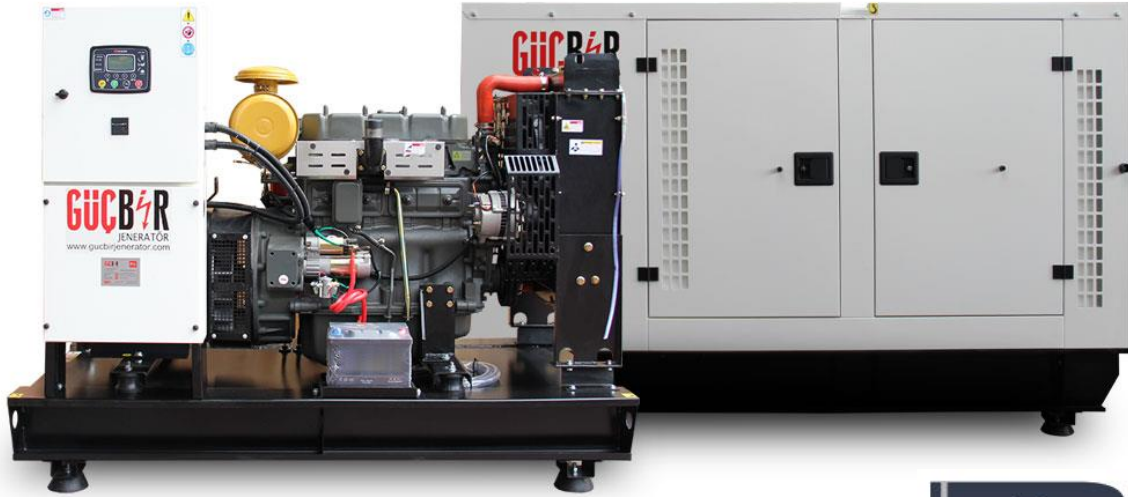
With in the short-term energy supply interruption ; The Generator sets in accordance ISO 8528/5-ESP can give a maximum power.

Main Features

- * CE, ISO, TSE compliant for stationary application
- * Model available in openskid and soundproofed
- * With galvanized rustproofed canopy
- * With in High level Designed, engineered and manufacturing genset and optimal performance
- * 65-75 Noise isolation within modüler canopy
- * Easy operation, maintenance and power panel
- * Turkish, English, Russian language choice

GJD 16000S-3		
FREQUENCY	HZ.	50
VOLTAGE	v	230/400
STANDBY	kVA	13,5
PRIME	kVA	15
AMPER	A	21,6
PHASE		3
VOLTAGE REGULATION		AVR
POWER FACTOR		0,8
NOISE (DB)	db	75
ENGINE MODEL		292FAE
BORE AND STROKE	mm	2-92x75
Max.Power HP/rpm	HP/rpm	19,5/3000
STARTING SYSTEM		Elektric Start
OIL CAPACITY	Litre	4
FUEL CAPACITY	Litre	45
FUEL CONSUMPTION	gkW/h	330
N.W/G.W(KG)	kg	320
DIMENSION (EXBXY) MM	mm	1300x700x955
20FT (SET)		24
40HQ(SET)		54





GJR55 DIESEL GENERATOR

GRUP		
STAND BY	kVA	55
	kW	44
PRIME	kVA	50
	kW	40

DIESEL ENGINE		
BRAND		Ricardo
MODEL		R4105D
TYPE		DIRECT INJECTION
PRIME POWER	1500 rpm	42
CYLINDER VOLUME		4,33
NUMBER OF CYLINDER		4 - Sıra
ASPIRATION AND COOLING		INTAKE NATURAL
COOLING SYSTEM		WATER RADIATOR
HEATING POWER		1000V
SPEED		1500
BORE and STROKE	mmxmm	105x125
GOVERNOR TYPE		MECHANIC
FUEL CONSUMPTION AT FULL LOA	g/kWh	231
OIL CAPACITY	lt.	14
WATER CAPACITY	lt.	21
VOLTAGE	V	12V
BATTERY	A	105A

Prime Power

Working on the long-term disruption of network energy , An overload of 10% is allowed for 1 hour of every 12 hours. In accordance with ISO 8528/1 (2005) - PRP

Standby Power

With in the short-term energy supply interruption ; The Generator sets in accordance ISO 8528/5-ESP can give a maximum power

Main Features

- * CE, ISO, TSE compliant for stationary application
- * Model available in openskid and soundproofed
- * With galvanized rustproofed canopy
- * With in High level Designed, engineered and manufacturing genset and optimal performance
- * 65-75 Noise isolation within modüler canopy
- * Easy operation, maintenance and power panel
- * Turkish, English, Russian language choice

FUEL TANK CAPACITY / FUEL CONSUMPTIONS		
50%	lt./ hr.	7,06
75%	lt./ hr.	8,15
100%	lt./ hr.	10,87
110%	lt./ hr.	12,28
FUEL CAPACITY	lt.	200,00

ALTERNATOR

- Four pole alternator, Lifetime lasting greased bearing
- H class insulation
- Brushless ans 2/3 pitch, with AVR card
- Incorporates electromagnetic emission suppressor in accordance with CE legislation
- Maranello brand alternators has TSE certificate

Regulations

- IEC 600034
- ISO 8528/3
- VDE 0530

Low wave distortion

- THD < 4 %
- THF (IEC) < 2 %
- TIF (NEMA) < 50

ALTERNATOR		
BRAND		Maranello
MODEL		M55
OUTPUT VOLTAGE	V	230/400
FREQUENCY	HZ	50
AUTOMATIC VOLTAGE REGULATION	±%	0,5
ALTERNATOR STAND BY POWER	kVA	55
ALTERNATOR CONTINUOUS POWER	kVA	50
POWER FACTOR	Cosq	0,8
NUMBER OF WIRES		12
WINDING		2/3
PROTECTION CLASS		IP23 / H
EXCITATION SYSTEM		Self-excited
AVR MODEL		SX440
PERFORMANCE - PF 0,8/%75 LOAD	%	88

The Certificates of Genset

- 2006/42/EC Machinery Safety
- 2006/95/EC Low Voltage
- 2004/108/EC Electromagnetic Compapility
- 2000/14/EC Sound isolation
- ISO 9001:2000
- EN ISO 14001:2004
- OHSAS 18001:1999
- CE Certificate
- TSE Certificate of Quality
- Domestic Goods Certificate
- TSE HYB
- SSHYB
- Production Qualitification Certificate
- Industry Registration Certificate
- Capacity Report
- Trademark registration certificate

CONTROL PANEL

- True RMS measurements
- ECU connection through J1939 CAN option
- J1939 ECU warnings displayed as text
- MPU input option
- Dual genset mutual standby operation
- Event logging with time stamp and measurements
- Battery backed-up real time clock
- Built in daily / weekly / monthly exerciser
- Weekly operation schedule programs
- Field adjustable parameters
- RS-232 serial port
- Free MS-Windows Remote monitoring SW
- GSM and PSTN modem support
- GSM SMS message sending on fault
- MODBUS communications

- 16 Amp contactor outputs
- 1 Amp DC semiconductor outputs
- Configurable analogue inputs: 4
- Configurable digital inputs: 7
- Configurable digital inputs: 2
- Total digital outputs: 6
- I/O expansion capability Plug-in connection system
- The unit records last 100 events with date-time stamp total of 18 measured parameters.



ELECTRICAL PANEL

ELECTRICAL PANEL		
CIRCUIT BREAKER		3x100A * Optional
BATTERY CHARGER		SMPS125
VOLTAGE	V	12V
FREQUENCY	Hz.	50

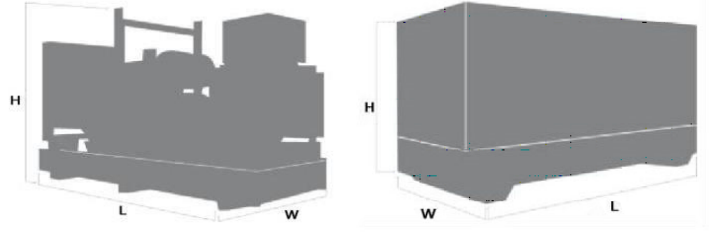
ATS

3x85A Contactor
4X85A Contactor * Optional

DIMENSIONS

DIMENSIONS

Lenght (With Canopy) cm	170 (225)
Wide (With Canopy) cm	95 (95)
Height (With Canopy) cm	145 (160)
Weight (With Canopy) kg	850 (1230)



OPTIONAL FEATURES

Mechanical

- Galvanised Retention Bund (For soundproofed Units)
- Fuel, oil and air filter heaters
- Auxiliary Double Walled Fuel Tanks
- Residential type Silencer
- Synchronisation Systems
- Huge fuel tanks regarding special orders
- High range alternator
- Control system (by Sim and network)
- Connection to external fuel tank
- Automatic Fuel Systems

Control Panel

- D500
- D700
- ComAp AMF9
- ComAp AMF25
- SMPS 2410 24V

Engine

- High Performance Fuelfilter water Separator
- 60 Hz. / 1800 Rpm
- Mechanic or Electronic Oil Sump Pump

Alternator

- Alternator excitation type: AREP, PMI or PMG
- Anti condensation heaters
- Protection System 2 or 4
- Special AVR

AMF Synchronizing Control Panel

- Datakom D700
- Woodward Easygen 3200

Trailer - Genset Trailer

Our trailers are produced as single-axle, two-axle and four-axle types for heavy and light tonnage capacities and absolutely appropriate to vehicle regulations.

Gucbir Jenerator is a certified company with ISO 9001:2000, EN ISO 14001:2004, OHSAS 18001:1999. Quality Systems, and acquired European Conformity Standards CE Certificate and TSE Quality Certificates and GUCBIR reserves the right to modify any characteristics of their equipment without prior warning.

GUCBIR JENERATOR SAN. TIC. LTD. STI.

Eksioglu Mah. Yavuz Selim Cd. 86.Sokak No.2
Tasdelen/Cekmeköy/ISTANBUL
Tel : 216 429 77 72 (pbx)
Fax : 216 429 78 73
info@gucbirjenerator.com
www.gucbirjenerator.com

DISTRIBUTED BY





GJR110 DIESEL GENERATOR

GRUP		
STAND BY	kVA	110
	kW	88
PRIME	kVA	100
	kW	80

DIESEL ENGINE		
BRAND		Ricardo
MODEL		R6105AZLD
TYPE		DIRECT INJECTION
PRIME POWER	1500 rpm	121
CYLINDER VOLUME		6,75
NUMBER OF CYLINDER		6 - Sıra
ASPIRATION AND COOLING		TURBO CHARGE, Aftercooler
COOLING SYSTEM		WATER RADIATOR
HEATING POWER		1000V
SPEED		1500
BORE and STROKE	mmxmm	105x130
GOVERNOR TYPE		MECHANIC
FUEL CONSUMPTION AT FULL LOAD	g/kWh	218
OIL CAPACITY	lt.	18
WATER CAPACITY	lt.	27
VOLTAGE	V	24V
BATTERY	A	2X60A

Prime Power

Working on the long-term disruption of network energy , An overload of 10% is allowed for 1 hour of every 12 hours. In accordance with ISO 8528/1 (2005) - PRP

Standby Power

With in the short-term energy supply interruption ; The Generator sets in accordance ISO 8528/5-ESP can give a maximum power

Main Features

- * CE, ISO, TSE compliant for stationary application
- * Model available in openskid and soundproofed
- * With galvanized rustproofed canopy
- * With in High level Designed, engineered and manufacturing genset and optimal performance
- * 65-75 Noise isolation within modüler canopy
- * Easy operation, maintenance and power panel
- * Turkish, English, Russian language choice

FUEL TANK CAPACITY / FUEL CONSUMPTIONS		
50%	lt./ hr.	13,33
75%	lt./ hr.	15,38
100%	lt./ hr.	20,51
110%	lt./ hr.	23,18
FUEL CAPACITY	lt.	300,00

ALTERNATOR

- Four pole alternator, Lifetime lasting greased bearing
- H class insulation
- Brushless ans 2/3 pitch, with AVR card
- Incorporates electromagnetic emission suppressor in accordance with CE legislation
- Maranello brand alternators has TSE certificate

Regulations

- IEC 600034
- ISO 8528/3
- VDE 0530

Low wave distortion

- THD < 4 %
- THF (IEC) < 2 %
- TIF (NEMA) < 50

ALTERNATOR		
BRAND		Maranello
MODEL		M110
OUTPUT VOLTAGE	V	230/400
FREQUENCY	HZ	50
AUTOMATIC VOLTAGE REGULATION	±%	0,5
ALTERNATOR STAND BY POWER	kVA	112
ALTERNATOR CONTINUOUS POWER	kVA	100
POWER FACTOR	Cosq	0,8
NUMBER OF WIRES		12
WINDING		2/3
PROTECTION CLASS		IP23 / H
EXCITATION SYSTEM		Self-excited
AVR MODEL		SX440
PERFORMANCE - PF 0,8/%75 LOAD	%	92

The Certificates of Genset

- 2006/42/EC Machinery Safety
- 2006/95/EC Low Voltage
- 2004/108/EC Electromagnetic Compapility
- 2000/14/EC Sound isolation
- ISO 9001:2000
- EN ISO 14001:2004
- OHSAS 18001:1999
- CE Certificate
- TSE Certificate of Quality
- Domestic Goods Certificate
- TSE HYB
- SSHYB
- Production Qualitification Certificate
- Industry Registration Certificate
- Capacity Report
- Trademark registration certificate

CONTROL PANEL

- True RMS measurements
- ECU connection through J1939 CAN option
- J1939 ECU warnings displayed as text
- MPU input option
- Dual genset mutual standby operation
- Event logging with time stamp and measurements
- Battery backed-up real time clock
- Built in daily / weekly / monthly exerciser
- Weekly operation schedule programs
- Field adjustable parameters
- RS-232 serial port
- Free MS-Windows Remote monitoring SW
- GSM and PSTN modem support
- GSM SMS message sending on fault
- MODBUS communications

- 16 Amp contactor outputs
- 1 Amp DC semiconductor outputs
- Configurable analogue inputs: 4
- Configurable digital inputs: 7
- Configurable digital inputs: 2
- Total digital outputs: 6
- I/O expansion capability Plug-in connection system
- The unit records last 100 events with date-time stamp total of 18 measured parameters.



ELECTRICAL PANEL

ELECTRICAL PANEL		
CIRCUIT BREAKER		3x225A * Optional
BATTERY CHARGER		SMPS245
VOLTAGE	V	24V
FREQUENCY	Hz.	50

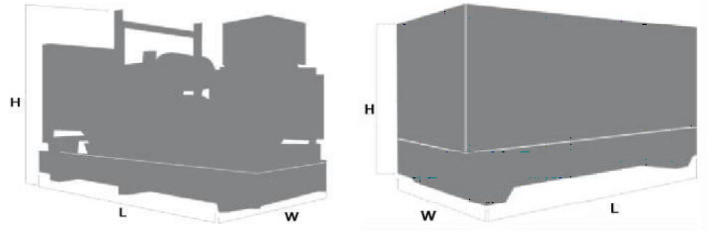
ATS

3x245A Contactor
4X245A Contactor * Optional

DIMENSIONS

DIMENSIONS

Lenght (With Canopy) cm	220 (300)
Wide (With Canopy) cm	110 (110)
Height (With Canopy) cm	170 (175)
Weight (With Canopy) kg	1400 (1715)



OPTIONAL FEATURES

Mechanical

- Galvanised Retention Bund (For soundproofed Units)
- Fuel, oil and air filter heaters
- Auxiliary Double Walled Fuel Tanks
- Residential type Silencer
- Synchronisation Systems
- Huge fuel tanks regarding special orders
- High range alternator
- Control system (by Sim and network)
- Connection to external fuel tank
- Automatic Fuel Systems

Control Panel

- D500
- D700
- ComAp AMF9
- ComAp AMF25
- SMPS 2410 24V

Engine

- High Performance Fuelfilter water Separator
- 60 Hz. / 1800 Rpm
- Mechanic or Electronic Oil Sump Pump

Alternator

- Alternator excitation type: AREP, PMI or PMG
- Anti condensation heaters
- Protection System 2 or 4
- Special AVR

AMF Synchronizing Control Panel

- Datakom D700
- Woodward Easygen 3200

Trailer - Genset Trailer

Our trailers are produced as single-axle, two-axle and four-axle types for heavy and light tonnage capacities and absolutely appropriate to vehicle regulations.

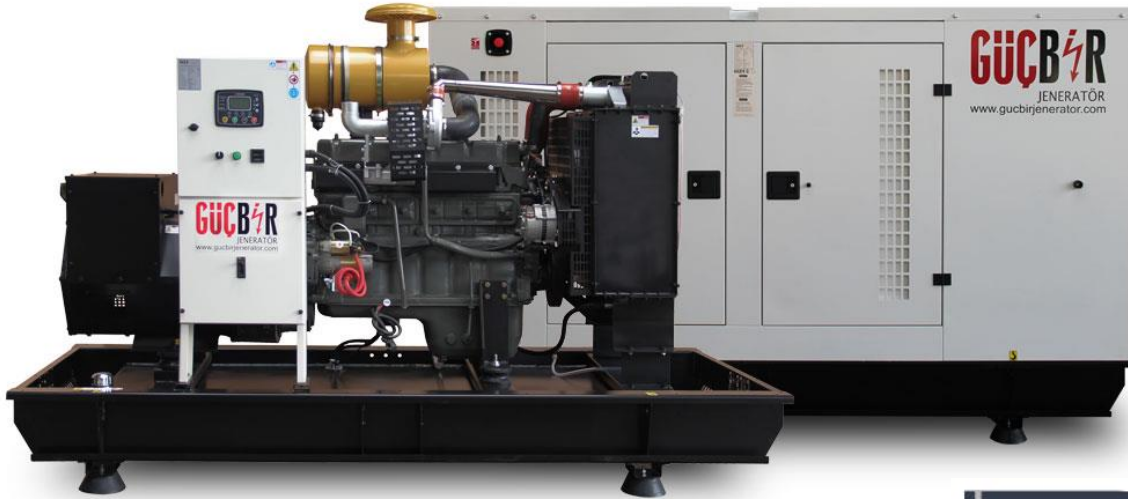
Gucbir Jenerator is a certified company with ISO 9001:2000, EN ISO 14001:2004, OHSAS 18001:1999. Quality Systems, and acquired European Conformity Standards CE Certificate and TSE Quality Certificates and GUCBIR reserves the right to modify any characteristics of their equipment without prior warning.

GUCBIR JENERATOR SAN. TIC. LTD. STI.

Eksioglu Mah. Yavuz Selim Cd. 86.Sokak No.2
Tasdelen/Cekmeköy/ISTANBUL
Tel : 216 429 77 72 (pbx)
Fax : 216 429 78 73
info@gucbirjenerator.com
www.gucbirjenerator.com

DISTRIBUTED BY





GJR150 DIESEL GENERATOR

GRUP		
STAND BY	kVA	150
	kW	120
PRIME	kVA	136
	kW	108,8

DIESEL ENGINE		
BRAND		Ricardo
MODEL		R6105AZLD
TYPE		DIRECT INJECTION
PRIME POWER	1500 rpm	121
CYLINDER VOLUME		6,75
NUMBER OF CYLINDER		6 - Sıra
ASPIRATION AND COOLING		TURBO CHARGE, Afterco
COOLING SYSTEM		WATER RADIATOR
HEATING POWER		1000V
SPEED		1500
BORE and STROKE	mmxmm	105x130
GOVERNOR TYPE		MECHANIC
FUEL CONSUMPTION AT FULL LOA	g/kWh	218
OIL CAPACITY	lt.	18
WATER CAPACITY	lt.	27
VOLTAGE	V	24V
BATTERY	A	2X60A

Prime Power

Working on the long-term disruption of network energy , An overload of 10% is allowed for 1 hour of every 12 hours. In accordance with ISO 8528/1 (2005) - PRP

Standby Power

With in the short-term energy supply interruption ; The Generator sets in accordance ISO 8528/5-ESP can give a maximum power

Main Features

- * CE, ISO, TSE compliant for stationary application
- * Model available in openskid and soundproofed
- * With galvanized rustproofed canopy
- * With in High level Designed, engineered and manufacturing genset and optimal performance
- * 65-75 Noise isolation within modüler canopy
- * Easy operation, maintenance and power panel
- * Turkish, English, Russian language choice

FUEL TANK CAPACITY / FUEL CONSUMPTIONS		
50%	lt./ hr.	18,18
75%	lt./ hr.	20,98
100%	lt./ hr.	27,97
110%	lt./ hr.	31,61
FUEL CAPACITY	lt.	300,00

ALTERNATOR

- Four pole alternator, Lifetime lasting greased bearing
- H class insulation
- Brushless ans 2/3 pitch, with AVR card
- Incorporates electromagnetic emission suppressor in accordance with CE legislation
- Maranello brand alternators has TSE certificate

Regulations

- IEC 600034
- ISO 8528/3
- VDE 0530

Low wave distortion

- THD < 4 %
- THF (IEC) < 2 %
- TIF (NEMA) < 50

ALTERNATOR		
BRAND		Maranello
MODEL		M150
OUTPUT VOLTAGE	V	230/400
FREQUENCY	HZ	50
AUTOMATIC VOLTAGE REGULATION	±%	0,5
ALTERNATOR STAND BY POWER	kVA	150
ALTERNATOR CONTINUOUS POWER	kVA	140
POWER FACTOR	Cosq	0,8
NUMBER OF WIRES		12
WINDING		2/3
PROTECTION CLASS		IP23 / H
EXCITATION SYSTEM		Self-excited
AVR MODEL		SX440
PERFORMANCE - PF 0,8/%75 LOAD	%	93

The Certificates of Genset

- 2006/42/EC Machinery Safety
- 2006/95/EC Low Voltage
- 2004/108/EC Electromagnetic Compapility
- 2000/14/EC Sound isolation
- ISO 9001:2000
- EN ISO 14001:2004
- OHSAS 18001:1999
- CE Certificate
- TSE Certificate of Quality
- Domestic Goods Certificate
- TSE HYB
- SSHYB
- Production Qualitification Certificate
- Industry Registration Certificate
- Capacity Report
- Trademark registration certificate

CONTROL PANEL

- True RMS measurements
- ECU connection through J1939 CAN option
- J1939 ECU warnings displayed as text
- MPU input option
- Dual genset mutual standby operation
- Event logging with time stamp and measurements
- Battery backed-up real time clock
- Built in daily / weekly / monthly exerciser
- Weekly operation schedule programs
- Field adjustable parameters
- RS-232 serial port
- Free MS-Windows Remote monitoring SW
- GSM and PSTN modem support
- GSM SMS message sending on fault
- MODBUS communications

- 16 Amp contactor outputs
- 1 Amp DC semiconductor outputs
- Configurable analogue inputs: 4
- Configurable digital inputs: 7
- Configurable digital inputs: 2
- Total digital outputs: 6
- I/O expansion capability Plug-in connection system
- The unit records last 100 events with date-time stamp total of 18 measured parameters.



ELECTRICAL PANEL

ELECTRICAL PANEL		
CIRCUIT BREAKER		3x225A * Optional
BATTERY CHARGER		SMPS245
VOLTAGE	V	24V
FREQUENCY	Hz.	50

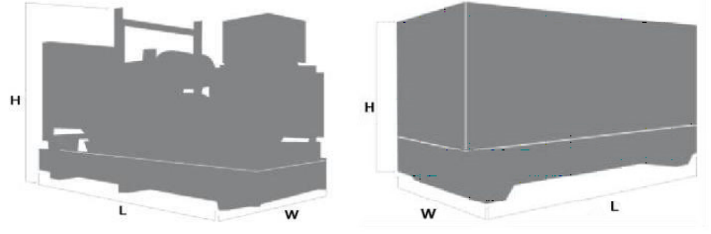
ATS

3x245A Contactor
4X245A Contactor * Optional

DIMENSIONS

DIMENSIONS

Lenght (With Canopy) cm	220 (300)
Wide (With Canopy) cm	110 (110)
Height (With Canopy) cm	170 (175)
Weight (With Canopy) kg	1450 (1780)



OPTIONAL FEATURES

Mechanical

- Galvanised Retention Bund (For soundproofed Units)
- Fuel, oil and air filter heaters
- Auxiliary Double Walled Fuel Tanks
- Residential type Silencer
- Synchronisation Systems
- Huge fuel tanks regarding special orders
- High range alternator
- Control system (by Sim and network)
- Connection to external fuel tank
- Automatic Fuel Systems

Control Panel

- D500
- D700
- ComAp AMF9
- ComAp AMF25
- SMPS 2410 24V

Engine

- High Performance Fuelfilter water Separator
- 60 Hz. / 1800 Rpm
- Mechanic or Electronic Oil Sump Pump

Alternator

- Alternator excitation type: AREP, PMI or PMG
- Anti condensation heaters
- Protection System 2 or 4
- Special AVR

AMF Synchronizing Control Panel

- Datakom D700
- Woodward Easygen 3200

Trailer - Genset Trailer

Our trailers are produced as single-axle, two-axle and four-axle types for heavy and light tonnage capacities and absolutely appropriate to vehicle regulations.

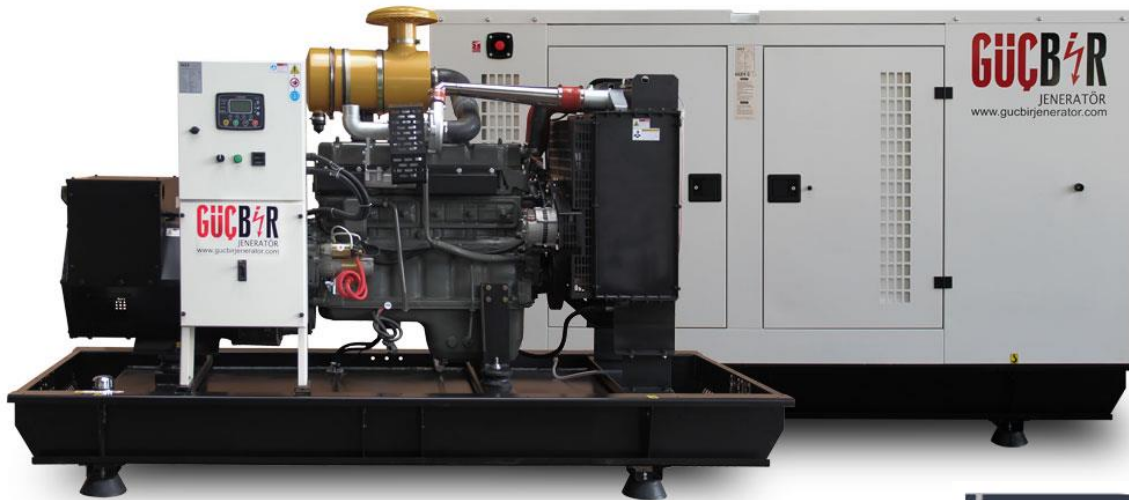
Gucbir Jenerator is a certified company with ISO 9001:2000, EN ISO 14001:2004, OHSAS 18001:1999. Quality Systems, and acquired European Conformity Standards CE Certificate and TSE Quality Certificates and GUCBIR reserves the right to modify any characteristics of their equipment without prior warning.

GUCBIR JENERATOR SAN. TIC. LTD. STI.

Eksioglu Mah. Yavuz Selim Cd. 86.Sokak No.2
Tasdelen/Cekmeköy/ISTANBUL
Tel : 216 429 77 72 (pbx)
Fax : 216 429 78 73
info@gucbirjenerator.com
www.gucbirjenerator.com

DISTRIBUTED BY





GJR175 DIESEL GENERATOR

GRUP		
STAND BY	kVA	175
	kW	140
PRIME	kVA	160
	kW	128

DIESEL ENGINE		
BRAND		Ricardo
MODEL		R6105IZLD
TYPE		DIRECT INJECTION
PRIME POWER	1500 rpm	132
CYLINDER VOLUME		7,01
NUMBER OF CYLINDER		6 - Sıra
ASPIRATION AND COOLING		TURBO CHARGE, Afterco
COOLING SYSTEM		WATER RADIATOR
HEATING POWER		1000V
SPEED		1500
BORE and STROKE	mmxmm	105x135
GOVERNOR TYPE		MECHANIC
FUEL CONSUMPTION AT FULL LOA	g/kWh	218
OIL CAPACITY	lt.	19
WATER CAPACITY	lt.	27
VOLTAGE	V	24V
BATTERY	A	2X60A

Prime Power

Working on the long-term disruption of network energy , An overload of 10% is allowed for 1 hour of every 12 hours. In accordance with ISO 8528/1 (2005) - PRP

Standby Power

With in the short-term energy supply interruption ; The Generator sets in accordance ISO 8528/5-ESP can give a maximum power

Main Features

- * CE, ISO, TSE compliant for stationary application
- * Model available in openskid and soundproofed
- * With galvanized rustproofed canopy
- * With in High level Designed, engineered and manufacturing genset and optimal performance
- * 65-75 Noise isolation within modüler canopy
- * Easy operation, maintenance and power panel
- * Turkish, English, Russian language choice

FUEL TANK CAPACITY / FUEL CONSUMPTIONS		
50%	lt./ hr.	20,00
75%	lt./ hr.	23,07
100%	lt./ hr.	30,76
110%	lt./ hr.	34,76
FUEL CAPACITY	lt.	300,00

ALTERNATOR

- Four pole alternator, Lifetime lasting greased bearing
- H class insulation
- Brushless ans 2/3 pitch, with AVR card
- Incorporates electromagnetic emission suppressor in accordance with CE legislation
- Maranello brand alternators has TSE certificate

Regulations

- IEC 600034
- ISO 8528/3
- VDE 0530

Low wave distortion

- THD < 4 %
- THF (IEC) < 2 %
- TIF (NEMA) < 50

ALTERNATOR		
BRAND		Maranello
MODEL		M175
OUTPUT VOLTAGE	V	230/400
FREQUENCY	HZ	50
AUTOMATIC VOLTAGE REGULATION	±%	0,5
ALTERNATOR STAND BY POWER	kVA	175
ALTERNATOR CONTINUOUS POWER	kVA	150
POWER FACTOR	Cosq	0,8
NUMBER OF WIRES		12
WINDING		2/3
PROTECTION CLASS		IP23 / H
EXCITATION SYSTEM		Self-excited
AVR MODEL		SX440
PERFORMANCE - PF 0,8/%75 LOAD	%	93

The Certificates of Genset

- 2006/42/EC Machinery Safety
- 2006/95/EC Low Voltage
- 2004/108/EC Electromagnetic Compapility
- 2000/14/EC Sound isolation
- ISO 9001:2000
- EN ISO 14001:2004
- OHSAS 18001:1999
- CE Certificate
- TSE Certificate of Quality
- Domestic Goods Certificate
- TSE HYB
- SSHYB
- Production Qualitification Certificate
- Industry Registration Certificate
- Capacity Report
- Trademark registration certificate

CONTROL PANEL

- True RMS measurements
- ECU connection through J1939 CAN option
- J1939 ECU warnings displayed as text
- MPU input option
- Dual genset mutual standby operation
- Event logging with time stamp and measurements
- Battery backed-up real time clock
- Built in daily / weekly / monthly exerciser
- Weekly operation schedule programs
- Field adjustable parameters
- RS-232 serial port
- Free MS-Windows Remote monitoring SW
- GSM and PSTN modem support
- GSM SMS message sending on fault
- MODBUS communications

- 16 Amp contactor outputs
- 1 Amp DC semiconductor outputs
- Configurable analogue inputs: 4
- Configurable digital inputs: 7
- Configurable digital inputs: 2
- Total digital outputs: 6
- I/O expansion capability Plug-in connection system
- The unit records last 100 events with date-time stamp total of 18 measured parameters.



ELECTRICAL PANEL

ELECTRICAL PANEL		
CIRCUIT BREAKER		3x400A * Optional
BATTERY CHARGER		SMPS245
VOLTAGE	V	24V
FREQUENCY	Hz.	50

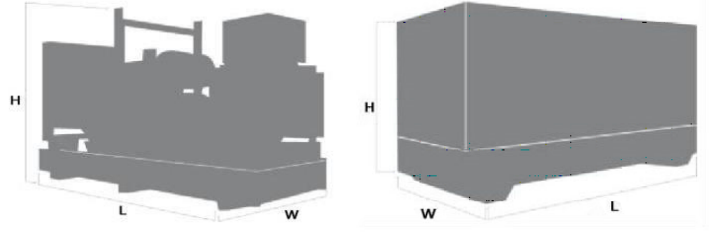
ATS

3x400A Contactor
4X400A Contactor * Optional

DIMENSIONS

DIMENSIONS

Lenght (With Canopy) cm	220(300)
Wide (With Canopy) cm	110(110)
Height (With Canopy) cm	170(180)
Weight (With Canopy) kg	1500(1825)



OPTIONAL FEATURES

Mechanical

- Galvanised Retention Bund (For soundproofed Units)
- Fuel, oil and air filter heaters
- Auxiliary Double Walled Fuel Tanks
- Residential type Silencer
- Synchronisation Systems
- Huge fuel tanks regarding special orders
- High range alternator
- Control system (by Sim and network)
- Connection to external fuel tank
- Automatic Fuel Systems

Control Panel

- D500
- D700
- ComAp AMF9
- ComAp AMF25
- SMPS 2410 24V

Engine

- High Performance Fuelfilter water Separator
- 60 Hz. / 1800 Rpm
- Mechanic or Electronic Oil Sump Pump

Alternator

- Alternator excitation type: AREP, PMI or PMG
- Anti condensation heaters
- Protection System 2 or 4
- Special AVR

AMF Synchronizing Control Panel

- Datakom D700
- Woodward Easygen 3200

Trailer - Genset Trailer

Our trailers are produced as single-axle, two-axle and four-axle types for heavy and light tonnage capacities and absolutely appropriate to vehicle regulations.

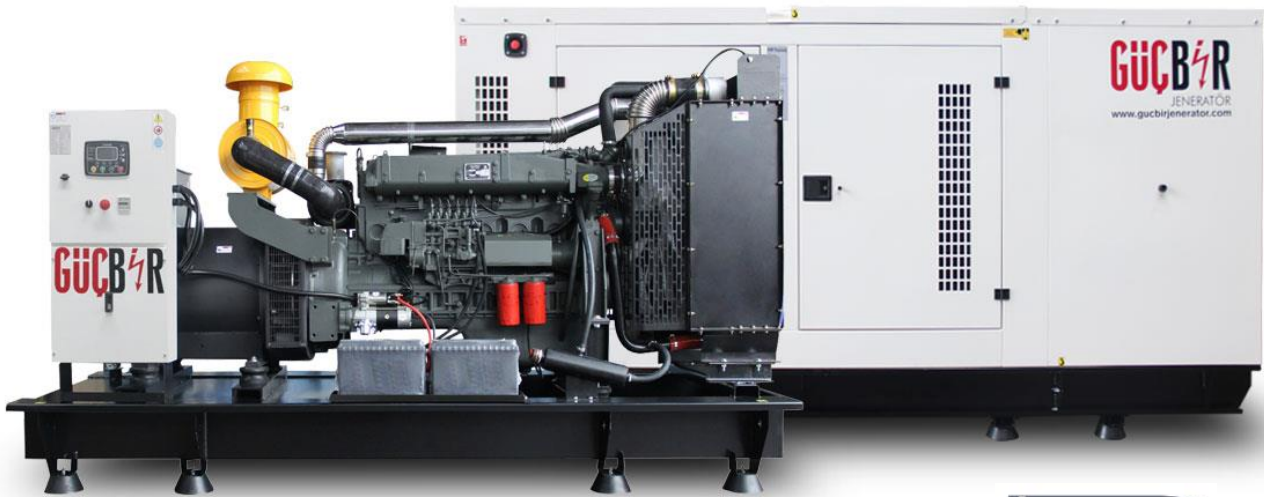
Gucbir Jenerator is a certified company with ISO 9001:2000, EN ISO 14001:2004, OHSAS 18001:1999. Quality Systems, and acquired European Conformity Standards CE Certificate and TSE Quality Certificates and GUCBIR reserves the right to modify any characteristics of their equipment without prior warning.

GUCBIR JENERATOR SAN. TIC. LTD. STI.

Eksioglu Mah. Yavuz Selim Cd. 86.Sokak No.2
Tasdelen/Cekmeköy/ISTANBUL
Tel : 216 429 77 72 (pbx)
Fax : 216 429 78 73
info@gucbirjenerator.com
www.gucbirjenerator.com

DISTRIBUTED BY





GJR220 DIESEL GENERATOR

GRUP		
STAND BY	kVA	220
	kW	176
PRIME	kVA	200
	kW	160

DIESEL ENGINE		
BRAND		Ricardo
MODEL		R6113AZLD
TYPE		DIRECT INJECTION
PRIME POWER	1500 rpm	175
CYLINDER VOLUME		7,52
NUMBER OF CYLINDER		6 - Sıra
ASPIRATION AND COOLING		TURBO CHARGE, Afterco
COOLING SYSTEM		WATER RADIATOR
HEATING POWER		1000V
SPEED		1500
BORE and STROKE	mmxmm	113x125
GOVERNOR TYPE		ELECTRONIC
FUEL CONSUMPTION AT FULL LOA	g/kWh	218
OIL CAPACITY	lt.	22
WATER CAPACITY	lt.	35
VOLTAGE	V	24V
BATTERY	A	2X60A

Prime Power

Working on the long-term disruption of network energy , An overload of 10% is allowed for 1 hour of every 12 hours. In accordance with ISO 8528/1 (2005) - PRP

Standby Power

With in the short-term energy supply interruption ; The Generator sets in accordance ISO 8528/5-ESP can give a maximum power

Main Features

- * CE, ISO, TSE compliant for stationary application
- * Model available in openskid and soundproofed
- * With galvanized rustproofed canopy
- * With in High level Designed, engineered and manufacturing genset and optimal performance
- * 65-75 Noise isolation within modüler canopy
- * Easy operation, maintenance and power panel
- * Turkish, English, Russian language choice

FUEL TANK CAPACITY / FUEL CONSUMPTIONS		
50%	lt./ hr.	26,66
75%	lt./ hr.	30,76
100%	lt./ hr.	41,02
110%	lt./ hr.	46,35
FUEL CAPACITY	lt.	300,00

ALTERNATOR

- Four pole alternator, Lifetime lasting greased bearing
- H class insulation
- Brushless ans 2/3 pitch, with AVR card
- Incorporates electromagnetic emission suppressor in accordance with CE legislation
- Maranello brand alternators has TSE certificate

Regulations

- IEC 600034
- ISO 8528/3
- VDE 0530

Low wave distortion

- THD < 4 %
- THF (IEC) < 2 %
- TIF (NEMA) < 50

ALTERNATOR		
BRAND		Maranello
MODEL		M220
OUTPUT VOLTAGE	V	230/400
FREQUENCY	HZ	50
AUTOMATIC VOLTAGE REGULATION	±%	0,5
ALTERNATOR STAND BY POWER	kVA	220
ALTERNATOR CONTINUOUS POWER	kVA	200
POWER FACTOR	Cosq	0,8
NUMBER OF WIRES		12
WINDING		2/3
PROTECTION CLASS		IP23 / H
EXCITATION SYSTEM		Self-excited
AVR MODEL		SX440
PERFORMANCE - PF 0,8/%75 LOAD	%	94

The Certificates of Genset

- 2006/42/EC Machinery Safety
- 2006/95/EC Low Voltage
- 2004/108/EC Electromagnetic Compapility
- 2000/14/EC Sound isolation
- ISO 9001:2000
- EN ISO 14001:2004
- OHSAS 18001:1999
- CE Certificate
- TSE Certificate of Quality
- Domestic Goods Certificate
- TSE HYB
- SSHYB
- Production Qualitification Certificate
- Industry Registration Certificate
- Capacity Report
- Trademark registration certificate

CONTROL PANEL

- True RMS measurements
- ECU connection through J1939 CAN option
- J1939 ECU warnings displayed as text
- MPU input option
- Dual genset mutual standby operation
- Event logging with time stamp and measurements
- Battery backed-up real time clock
- Built in daily / weekly / monthly exerciser
- Weekly operation schedule programs
- Field adjustable parameters
- RS-232 serial port
- Free MS-Windows Remote monitoring SW
- GSM and PSTN modem support
- GSM SMS message sending on fault
- MODBUS communications

- 16 Amp contactor outputs
- 1 Amp DC semiconductor outputs
- Configurable analogue inputs: 4
- Configurable digital inputs: 7
- Configurable digital inputs: 2
- Total digital outputs: 6
- I/O expansion capability Plug-in connection system
- The unit records last 100 events with date-time stamp total of 18 measured parameters.



ELECTRICAL PANEL

ELECTRICAL PANEL		
CIRCUIT BREAKER		3x400A * Optional
BATTERY CHARGER		SMPS245
VOLTAGE	V	24V
FREQUENCY	Hz.	50

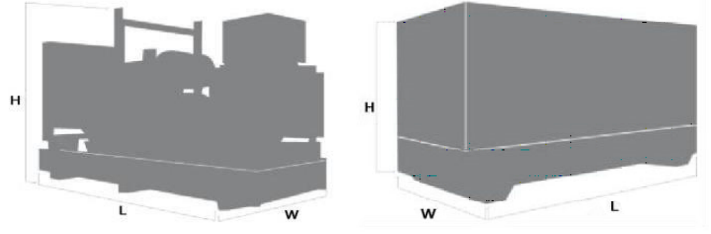
ATS

3x400A Contactor
4X400A Contactor * Optional

DIMENSIONS

DIMENSIONS

Lenght (With Canopy) cm	220(300)
Wide (With Canopy) cm	110(110)
Height (With Canopy) cm	170(196)
Weight (With Canopy) kg	2290(2940)



OPTIONAL FEATURES

Mechanical

- Galvanised Retention Bund (For soundproofed Units)
- Fuel, oil and air filter heaters
- Auxiliary Double Walled Fuel Tanks
- Residential type Silencer
- Synchronisation Systems
- Huge fuel tanks regarding special orders
- High range alternator
- Control system (by Sim and network)
- Connection to external fuel tank
- Automatic Fuel Systems

Control Panel

- D500
- D700
- ComAp AMF9
- ComAp AMF25
- SMPS 2410 24V

Engine

- High Performance Fuelfilter water Separator
- 60 Hz. / 1800 Rpm
- Mechanic or Electronic Oil Sump Pump

Alternator

- Alternator excitation type: AREP, PMI or PMG
- Anti condensation heaters
- Protection System 2 or 4
- Special AVR

AMF Synchronizing Control Panel

- Datakom D700
- Woodward Easygen 3200

Trailer - Genset Trailer

Our trailers are produced as single-axle, two-axle and four-axle types for heavy and light tonnage capacities and absolutely appropriate to vehicle regulations.

Gucbir Jenerator is a certified company with ISO 9001:2000, EN ISO 14001:2004, OHSAS 18001:1999. Quality Systems, and acquired European Conformity Standards CE Certificate and TSE Quality Certificates and GUCBIR reserves the right to modify any characteristics of their equipment without prior warning.

GUCBIR JENERATOR SAN. TIC. LTD. STI.

Eksioglu Mah. Yavuz Selim Cd. 86.Sokak No.2
Tasdelen/Cekmeköy/ISTANBUL
Tel : 216 429 77 72 (pbx)
Fax : 216 429 78 73
info@gucbirjenerator.com
www.gucbirjenerator.com

DISTRIBUTED BY

